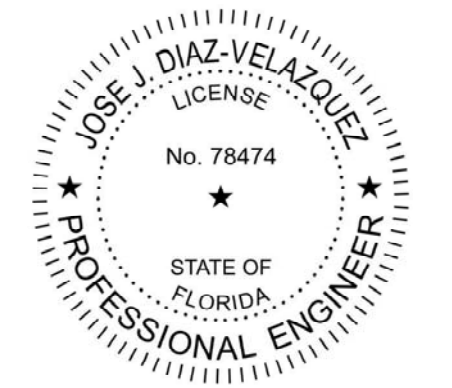






COPYRIGHT © 2023 - ALL REPORTS, PLANS, SPECIFICATIONS, COMPUTER FILES, FIELD DATA, NOTES & OTHER DOCUMENTS ARE INSTRUMENTS OF SERVICE PREPARED BY CURTIS PETERSON & COMPANY. INSTRUMENTS OF SERVICE REMAIN THE PROPERTY OF CP. CP SHALL RETAIN ALL COMMON LAW, STATUTORY, AND OTHER RESERVED RIGHTS, INCLUDING THE COPYRIGHT THERETO. ANY USE OR REPRODUCTION OF THIS DOCUMENT WITHOUT WRITTEN PERMISSION FROM CP IS A VIOLATION OF FEDERAL COPYRIGHT LAWS.

ARCHITECT/ENGINEER SEAL  
01/24/25



CONSULTANT

- ① COORDINATE LOCATION OF 2" WATER METER, SHUT OFF VALVE, AND BACK FLOW PREVENTOR WITH CIVIL ENGINEER. SEE CIVIL DRAWING FOR CONTINUATION.
- ② ROUTE 2" CW PIPING UP IN WALL TO CEILING SPACE. ROUTE AS HIGH AS POSSIBLE.
- ③ ROUTE 3/4" CW PIPING IN JOIST SPACE AND DOWN IN WALL TO WH-1.
- ④ INVERT ELEVATION + 3.5. SEE CIVIL DRAWING FOR CONTINUATION.
- ⑤ 4" SANTARY STUBBED UP AND CAPPED FOR FUTURE TENANT CONNECTION.
- ⑥ 4" GREASE STUBBED UP AND CAPPED FOR FUTURE TENANT CONNECTION.
- ⑦ INVERT ELEVATION + 4.5 SEE CIVIL DRAWING FOR CONTINUATION.
- ⑧ 2" COLD WATER STUBBED INTO SPACE AS HIGH POSSIBLE WITH SHUTOFF VALVE.
- ⑨ STORM PIPING DOWN. ROUTE TO EXTERIOR AND TIE TO UNDERGROUND STORM PIPING. REFER TO DRAWINGS FOR EXACT LOCATION.
- ⑩ PROVIDE 6" STORM PIPING OFFSET AS REQUIRED TO MEET TOTAL SHOWN BY CIVIL. REFER TO ARCHITECTURAL DRAWINGS FOR MORE INFORMATION.
- ⑪ GREASE WASTE VENT PIPING TO EXISTING INTERCEPTOR. SEE CIVIL DRAWINGS FOR CONTINUATION.
- ⑫ PROVIDE 3" VTR. STUB INTO BUILDING 12' BELOW ROOF DECK FOR FUTURE CONNECTION BY TENANT. PROVIDE TEMPORARY CAP. COORDINATE FINAL LOCATION WITH TENANT PLANS.
- ⑬ 3" GREASE INTERCEPTOR VENT UP TO VTR.
- ⑭ PROVIDE 3/4" COLD WATER BOLD GRADE OUT TO DUMPSTER ENCLOSURE. APPROXIMATE DISTANCES IS 115 FEET. PROVIDE WOODFORM MODEL B67 FREEZE-RESIST WALL HYDRANT WITH LOCKABLE BOX IN THE INTERIOR OF THE DUMPSTER ENCLOSURE. REFER TO ARCHITECTURAL DRAWING FOR FINAL LOCATION.
- ⑮ PROVIDE 4" TYPE B FLUE AT ROOF. STUB INTO BUILDING 12' BELOW ROOF DECK FOR FUTURE CONNECTION BY TENANT. COORDINATE FINAL LOCATION WITH TENANT PLANS.

[illegible]

PROJECT NO 20220266	DRAWN BY CC
PERMIT SUB DATE 01/24/2025	CHECKED BY NH

PROJECT

**STARBUCKS  
SHELL PACKAGE**

ST. LUCIE W BLVD & CASHMERE BLVD  
PORT SAINT LUCIE, FL.


CLIENT

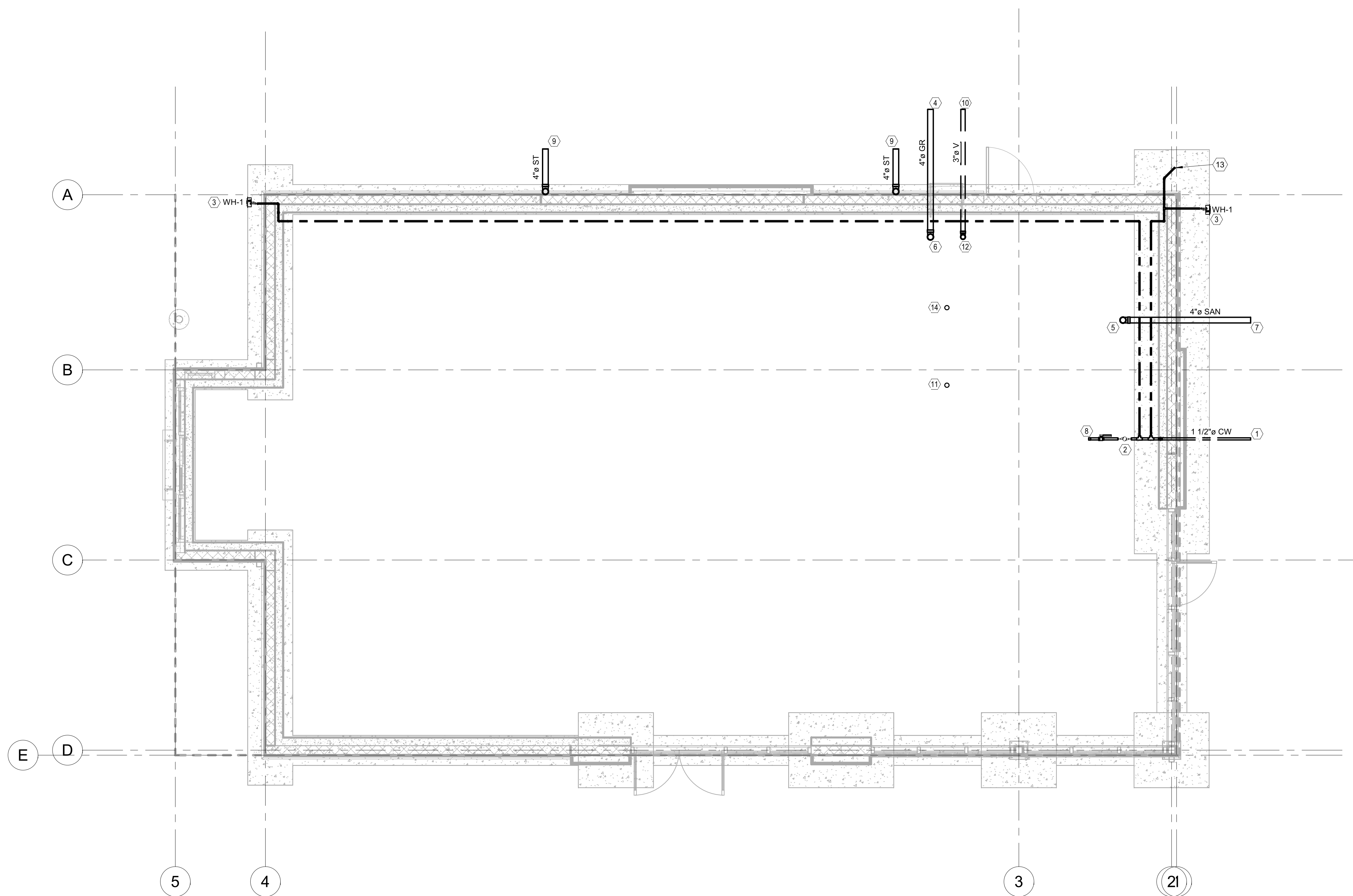
Regency Centers

2700 N. Military Trail, Suite 380  
Boca Raton, FL 33431

SHEET TITLE

PLUMBING FLOOR PLAN

SHEET NO. **P101** REV 



# 1 PLUMB\_FLOOR PLAN

SCALE: 1/4" = 1'-0"